



Bromley School Sport Partnership



Handbook 2010 - 2011



www.bromleyssp.co.uk

Contents Page

Welcome	Page 2	
Physical Education & Sport Strategy for Young People (PESSYP)	Page 3	
Map of Partnership (East)	Page 4	
Map of Partnership (West)	Page 5	
Partnership Conditions	Page 6	
Physical Education School Sport & Club Links survey questions	Page 6-7	
Role	Partnership Development Manager	Page 8-9
	School Sport Coordinator	Page 10-11
	FESCo	Page 12-13
	Primary Link Teacher	Page 14-15
	Competition Manager	Page 16
	Step Into Sport Manager	Page 17
Communication & Support Structure	Page 18	
Continuous Professional Development Calendar	Page 19-21	
Primary Schools Sporting Festivals Calendar	Page 22-23	
Secondary Schools Sporting Festival Calendar	Page 24-25	
Funding Process	Page 26	
PLT Allocated Release Time	Page 27	

Welcome

We welcome all schools and FE Colleges in Bromley to the sixth year of the Bromley School Sports Partnership. Bromley LA were successful in gaining DfES funding for two school sports partnerships which began in September 2005. The West Partnership is based at Kelsey Park Sports College and the Partnership Development Managers are Mike Vollar and Katherine Baird, the East Partnership is based at The Priory School and the Partnership Development Manager is Chris Caws. All primary, secondary and special schools in the borough are aligned within a partnership. The opportunity is now available for all schools and pupils to contribute and benefit from this crucially important learning through sports scheme.

Last year the Partnership achieved the following:

- Organised 43 sports borough competition/festivals for pupils ranging from reception to year 13.
- Across Bromley 76% of pupils are now experiencing 2 hours of Curriculum Physical Education and 53% 3 hours of PE & School Sport.

This handbook has been produced to provide guidance to schools for the most up to date information on events and CPD. Please visit the Partnership website at www.bromleyssp.co.uk for further information.

The Vision

The partnership's vision continues to be to provide high quality opportunities for physical activity within and beyond the curriculum for all young people in Bromley with an emphasis on fitness and health, competitive and non-competitive activity for life long learning.

The Aim

All children and young people aged 5 – 16 should have the opportunity to participate in five hours of PE & sport per week by 2011 (including two hours of high quality PE at school).

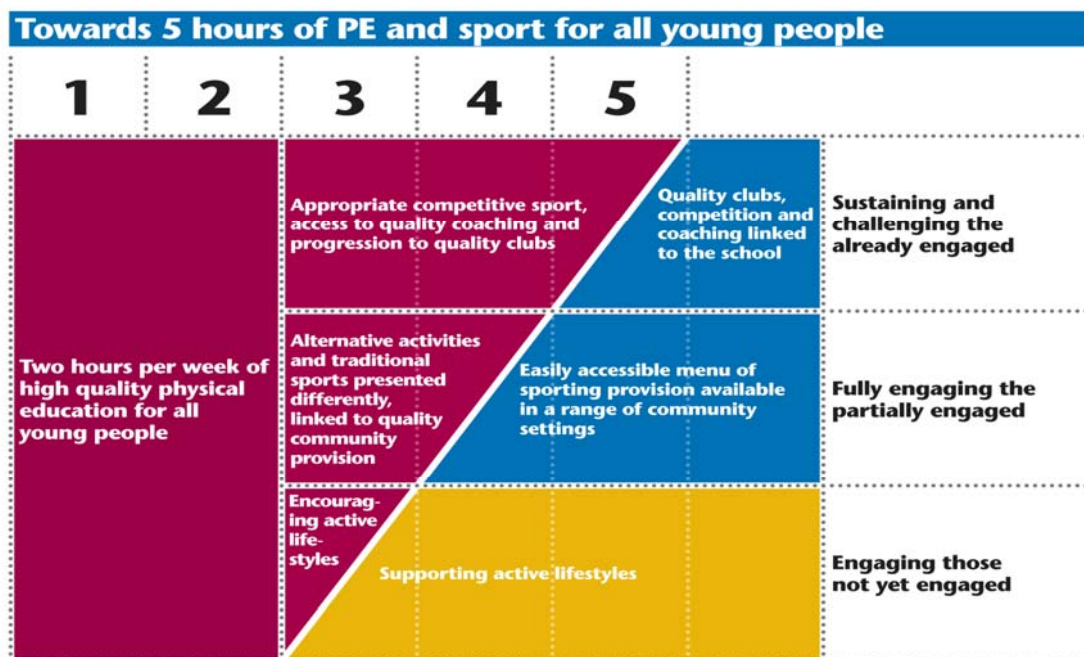
16 – 19 years three hours per week of sporting activities

Physical Education and Sport Strategy for Young People (PESSYP)

The new PE and Sport Strategy for Young People (PESSYP) launched in January 2008 expresses the Government's commitment to improve the quantity and quality of PE and sport undertaken by young people aged 5 - 19 in England. PESSYP builds on the success of the PE, School Sport and Club Links (PESSCL) Strategy for 5-16 year olds, which went live in April 2003. It will see an investment of £755 million over three years to deliver the work announced by the Prime Minister in July 2007, and is now set out in Public Service Agreement target 22.

The strategy is the joint overall responsibility of, the Department for Children, Schools and Families (DCSF) and the Department for Culture, Media and Sport (DCMS), working in particular with the Department for Universities, Innovation and Skills (DIUS) in relation to 16-19 year olds and with strong links to Department of Health.

There are key roles for the infrastructure of specialist sports colleges, school sport partnerships, national governing bodies, county sports partnerships and other community providers to ensure that all 5 -16 years olds have access to two hours PE and three hours beyond the curriculum and 16-19 year olds have three hours of sport outside of the curriculum. **Collectively, this is referred to as the "Five Hour Offer".**



PE and Sport Strategy for Young People has ten Work Strands as follows:

- School Sport Partnership Infrastructure
- Coaching
- Continuing Professional Development
- Sports Unlimited
- Leadership and Volunteering
- Club Links
- Competition
- Disability
- Gifted and Talented
- Swimming

School Sports Partnership (East)

Partnership Development Manager

Chris Caws

The Priory School

Tintagel Road

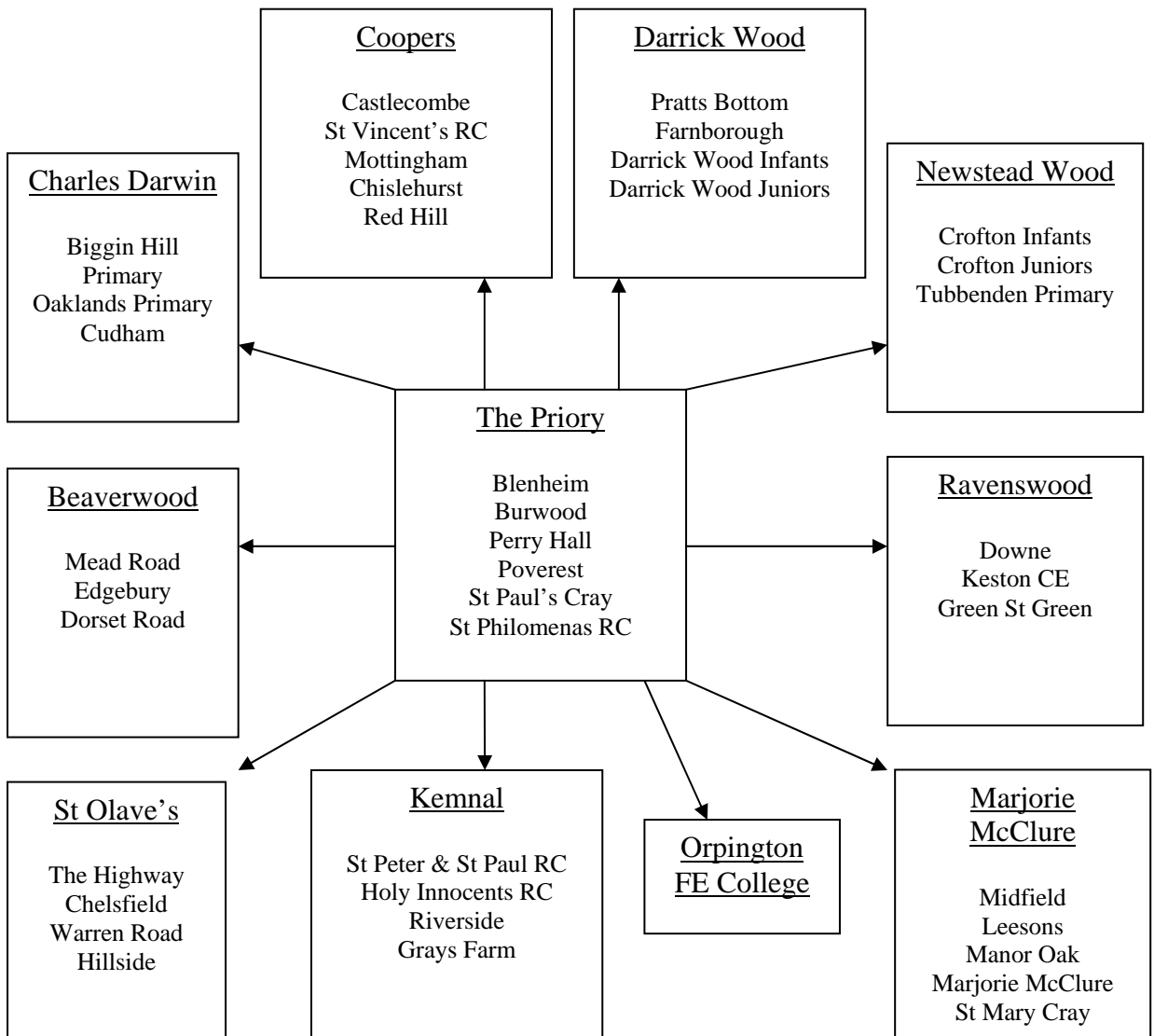
Orpington

BR5 4LG

Tel: 01689 604361

07748399543

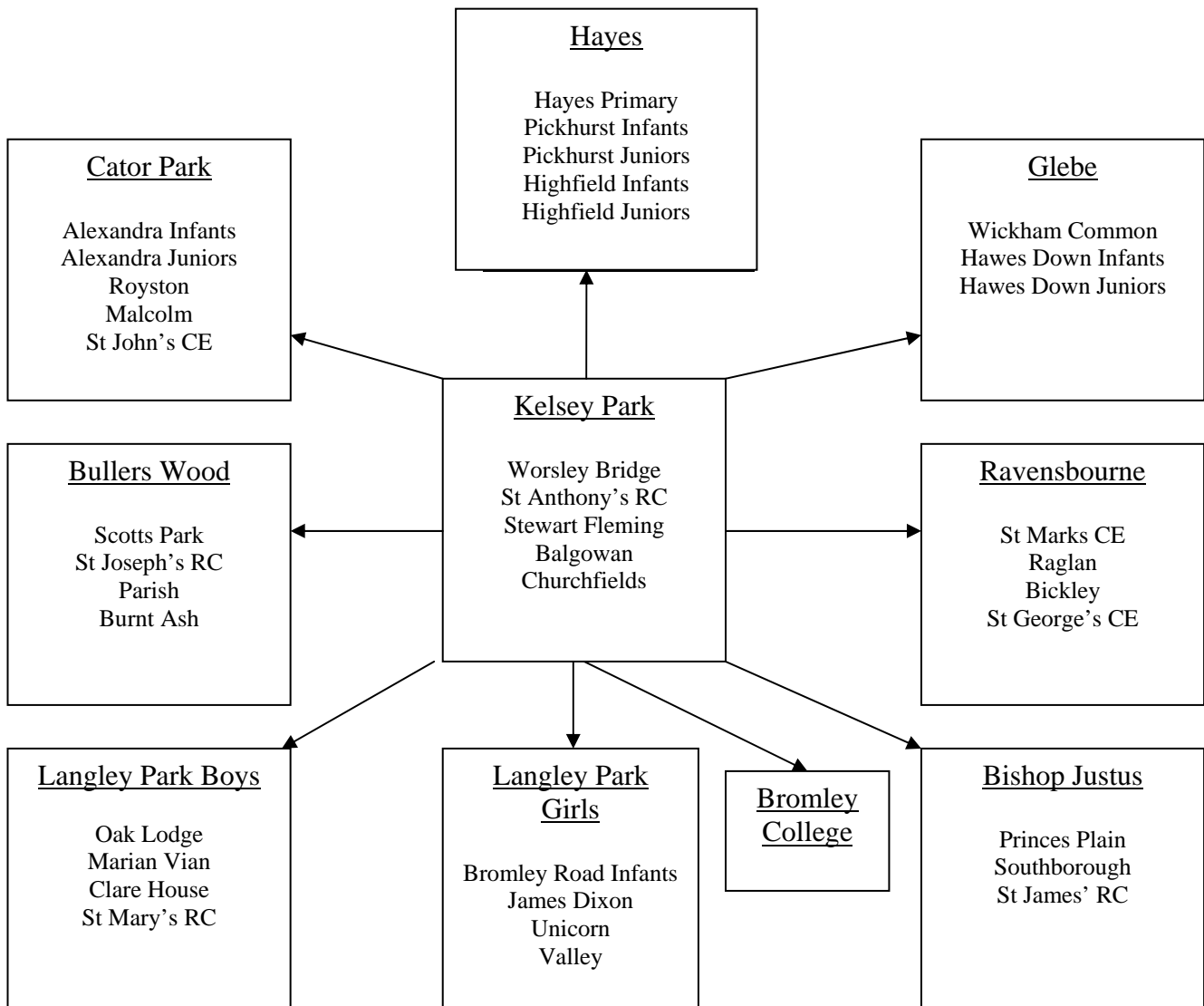
Email: Chris.caws@staffpriory.co.uk



School Sports Partnership (West)
 Partnership Development Managers
 Mike Vollar/Katherine Baird (Job Share)
 Kelsey Park Sports College
 Manor Way
 Beckenham
 BR3 3SJ

Tel: 0208 650 8694 ext 632

Mike mvollar@kesleypark.bromley.sch.uk 07725 645406
 Katherine kbaird@kelseyPark.bromley.sch.uk 07983387841



Partnership Conditions

Our School Sport Partnership funding is based upon:

1. The condition that we work towards the Public Service Agreement target, which is:

That all children and young people aged 5 – 16 should have the opportunity to participate in 5 hours of PE & Sport per week by 2011 (including two hours of high quality PE at school).

and

3 hours per week of sporting activities for all 16 -19 year olds.

2. That all schools within the Partnership complete the Physical Education, Sport Strategy for Young People (PESSYP) national survey, annually. See questions below:

PESSYP SURVEY QUESTIONS

Question 1

What is the total curriculum time in minutes that all pupils in each year group spend taking part in PE in a typical week?

Question 1b

For Year groups 10-13 where the total curriculum time at Q1 was less than 120 minutes, what is the total number of pupils in each year group who participate in at least 120 minutes of PE in a typical week?

Question 2

What is the total number of pupils in each year group who participate in at least three hours of high-quality PE and out of hours school sport in a typical week?

Question 3

What is the total number of pupils in each year group involved in intra-school competitive activities during this academic year?

Question 4

What is the total number of pupils in each year group that have regularly participated in competitive intra-school sporting opportunities during this academic year?

Question 5

Did you hold at least one school sports day or equivalent event during this academic year?

Question 6

What is the total number of pupils in each year group who have taken part in inter-school competition during this academic year?

Question 7

What is the total number of pupils in each year group that have regularly participated in competitive inter-school sporting opportunities during this academic year?

Question 8

Which of the following sports or activities has your school provided this academic year?

Question 9

For which sports or activities do you have links to clubs?

Question 10

What is the total number of pupils in each year group who have participated in one or more community sports, dance or multi-skill clubs with links to the school during this academic year?

Question 11

What is the total number of pupils in each year group currently registered as gifted and talented because of their ability in PE and/or school sport?

Question 12

What is the total number of pupils in each year group actively involved in sports volunteering and leadership this academic year?

ROLES

Partnership Development Manager (PDM)

A full time strategic management position responsible for developing and managing partnerships within, between and beyond schools, to ensure every child matters in physical education and sport.

Overall role

- Contribute to the 5 hour offer by strategically developing and managing the partnership infrastructure.
- Identify the needs of all young people in the partnership in accessing the 5 hour offer.
- Determine the partnership's priorities in supporting all young people to access the 5 hour offer.
- Ensure the Partnership's priorities are advocated, understood and embedded in partner plans to allow all young people to access the 5 hour offer.

Main Responsibilities and Tasks

Leadership and Management of the Partnership

- Through the Partnership Steering group and other mediums articulate a clear vision for the partnership and engage partners to help realise the vision.
- Ensure that the work of the partnership is firmly embedded within local authority strategic frameworks and decision making processes so priorities can be linked to other relevant strategies e.g. health, youth offer, regeneration etc.
- In conjunction with the hub site ensure that the Partnership's work and finances are administered effectively.
- Support Head teachers and Principals in the identification, appointment and development of School Sport Coordinators, Further Education Sport Coordinators and Primary Link Teacher posts.
- Provide *functional* management to the Competition Manager, School Sport Coordinators and Further Education Sport Coordinators and support to Primary Link Teachers.
- Develop an ongoing self review document that reflects the priorities of each cluster of schools and meets the intended national outcomes with consideration of wider local plans.
- Establish robust data tracking and monitoring systems to help inform Partnership priorities.
- Fulfil the requirements of the national data collection process.
- Support the School Sport Coordinators, Further Education Sport Coordinators and Primary Link Teachers in evidencing and advocating the role of physical education and sport in raising whole school standards.
- Work with the Sports College Director of Specialism to ensure that the work of the Partnership complements the work of the Sports College.
- Promote the benefits and successes of the Partnership and establish and maintain regular communication between all interested parties.
- Identify and attract additional sources of funding to support sustainable development activity.

- Enable and encourage all schools to ensure that young people take part in a minimum of 2 hours high quality physical education and sport per week and a further 3 hours beyond the school day.

High Quality Physical Education for all Young People

- Support School Sport Coordinators to identify schools that have systems in place to assess if they have high quality physical education.
- Work with the Local Delivery Agency to support and signpost those schools that do not.

Access to High Quality Activities on a School Site

- Determine the Partnership's sporting landscape - who are the engaged, the non-engaged and what are their barriers to participation?
- In conjunction with key partners, strategically manage appropriate, targeted development of sustainable high quality OSHL programmes across the Partnership.

Access to High Quality Activities in a Community Environment

- In conjunction with the County Sports Partnership and relevant partners, ensure that school to community links across the Partnership are part of a wider strategic, sustainable sports development process.
- Work with key partners to support School Sport Coordinators, Further Education Sport Coordinators and Primary Link Teachers to signpost to appropriate high quality community sport pathways.

Provision for young people to develop their potential

- Work strategically with the Competition Manager to increase high quality competition opportunities for all young people.
- Identify which young people are engaged in competition and determine the barriers for those that aren't engaged.
- In conjunction with the County Sports Partnership and relevant partners, ensure that opportunities for talented young people to access high quality performance opportunities are part of a wider strategic, sustainable coaching development process.

High Quality Coaching, Leading and Volunteering

- Identify which young people are actively engaged in coaching, leading and volunteering; determine the barriers for those who aren't and develop a suitable pathway to grow and deploy all young people in high quality coaching, leadership and volunteering roles.
- Ensure that young people engaged in coaching, leadership and volunteering are reflective of the diversity of the Partnership and fully utilise the Step into Sport pathway to support development.
- In conjunction with the County Sports Partnership and relevant partners, ensure that high quality coaching, leadership and volunteering development within the Partnership is part of a wider strategic, sustainable development process.
- Support School Sport Coordinators and Further Education Sport Coordinators to implement high quality leadership and volunteering development programmes.
- Ensure the appropriate deployment of School Sport Coaches and Community Sport Coaches in support of the Partnership's high quality development activity.

School Sports Co-ordinator (SSCO)

An existing secondary school teacher (QTS) released from teaching who will coordinate school sport opportunities and community sport pathways within their cluster of schools

Overall role

- Identify the needs of all young people in the cluster in accessing the 5 hour offer.
- Determine the cluster priorities in supporting all young people to access the 5 hour offer.
- Ensure the cluster's priorities are advocated and understood across the partnership to allow all young people to access the 5 hour offer.

Main Responsibilities and Tasks

Leadership and Management of the Cluster

- Engage and maintain the support of the Head teachers.
- Develop an ongoing evaluation and priorities document that reflects the priorities of the cluster and forms part of the Partnership EPD.
- Establish robust data tracking and monitoring systems to help inform cluster priorities.
- Fulfil the requirements of local and national data collection processes.
- Advocate the role of physical education and sport in raising whole school standards by promoting the successes of their school and cluster's work ensuring it has a high profile
- Encourage all schools to ensure that young people take part in a minimum of 2 hours high quality physical education and sport per week leading to a further 3 hours beyond the school day.

High Quality Physical Education for all Young People

- Identify which schools in their cluster have systems in place to assess if they have high quality physical education.
- Work with the Partnership Development Manager to signpost support for those schools that do not.

Access to High Quality Activities on a School Site

- Determine the cluster's sporting landscape - who are the engaged, the non-engaged and what are their barriers to participation?
- Support their Subject Leader and their Primary Link Teachers to implement appropriately targeted, sustainable high quality OSHL programmes in their own school and cluster schools.
- Develop intra-school competitive opportunities in their own school and support competitive development in each of the cluster schools.

Access to High Quality Activities in a Community Environment

- Work with the Partnership Development Manager and partners to signpost young people in the cluster to appropriate high quality community sport pathways.

Provision for young people to develop their potential

- Identify which young people in their cluster are engaged in competition and determine the barriers for those that aren't engaged.
- Work strategically with the Competition Manager to increase high quality competition opportunities for all young people in their cluster.

Coaching, Leadership and Volunteering

- Identify which young people in the cluster are actively engaged in coaching, leading and volunteering. Determine the barriers for those who aren't engaged, developing a suitable pathway to grow and deploy all young people in high quality coaching, leadership and volunteering roles.
- Support the Subject Leader and Primary Link Teachers to implement high quality leadership and volunteering development programmes.
- Ensure that young people engaged in coaching, leadership and volunteering are reflective of the diversity of the cluster, fully utilising the Step into Sport pathway to support development.
- In conjunction with the Partnership Development Manager, ensure that coaching, leadership and volunteering development within the cluster is part of a wider strategic, sustainable development process.

Further Education Sport Co-ordinator (FESCO)

A 2 day per week post (minimum) who will coordinate College sporting opportunities and community sport pathways for students aged 16-19 years within their FE College

Overall role

- Identify the needs of all 16-19yr olds in their college in accessing the 3 hour offer.
- Determine the college's priorities in supporting all 16-19yr olds to access the 3 hour offer.
- Ensure the college's priorities are advocated, understood across the partnership to allow all 16-19yr olds to access the 3 hour offer.

Main Responsibilities and Tasks

Leadership and Management

- Engage and maintain the support of the Principal and SMT in the college.
- Develop an ongoing evaluation and priorities document / development plan that reflects the priorities of the college and forms part of the Partnership EPD
- Establish robust data tracking and monitoring systems to help inform the college priorities.
- Fulfil the requirements of local and national data collection processes.
- Advocate the role of sport in raising whole college standards by promoting the benefits and successes of the colleges work, ensuring it has a high profile

Access to High Quality Sporting Activities on a College Site

- Determine the college's sporting landscape - who are the engaged, the non-engaged and what are their barriers to participation?
- Implement a programme of appropriately targeted, sustainable, enrichment programmes for students in their own college
- Develop intra –mural competitive opportunities in their own college

Access to High Quality Activities in a Community Environment

- Work with the Partnership Development Manager and partners to signpost 16-19yr olds in the college to appropriate high quality community sport pathways.

Provision for young people to develop their potential

- Identify which 16-19yr olds in their college are engaged in competition and determine the barriers for those that aren't engaged.
- Work strategically with the Competition Manager to increase high quality competition opportunities for all young people in their college aged 16-19
- Develop inter-college competitive opportunities through liaison with other FESCos.

Coaching, Leadership and Volunteering

- Identify which 16-19yr olds in the college are actively engaged in coaching, leading and volunteering. Determine the barriers for those who aren't engaged, developing a suitable pathway to grow and deploy all 16-19yr olds in high quality coaching, leadership and volunteering roles.
- Implement high quality leadership and volunteering development programmes.
- Ensure that young people engaged in coaching, leadership and volunteering are reflective of the diversity of the college, fully utilising the Step into Sport pathway to support development.
- In conjunction with the Partnership Development Manager and School Sport Coordinators to ensure that coaching, leadership and volunteering development within the college is part of a wider strategic, sustainable development process.

Primary Link Teacher (PLT)

An existing primary or special school teacher (QTS) released from teaching for 12 days per year. The PLT will advocate high quality physical education, coordinate and support school sport opportunities and develop community sport pathways within their school.

Overall role

- Identify the needs of all young people in their school to access the 5 hour offer.
- Determine their school's priorities in supporting all young people to access the 5 hour offer.
- Ensure the school's priorities are advocated and understood across the family to allow all young people to access the 5 hour offer.

Main Responsibilities and Tasks

Leadership and Management

- Engage and maintain the support of the Head teacher in their school.
- Develop an individual school action plan that reflects the priorities of the school.
- Establish robust data tracking and monitoring systems to help inform school priorities.
- Fulfil the requirements of local and national data collection processes.
- Advocate the role of physical education and sport in raising whole school standards by promoting benefits and successes of their school's work, ensuring it has a high profile.
- Encourage the school to ensure that young people take part in a minimum of 2 hours high quality physical education and sport per week leading to a further 3 hours beyond the school day.

High Quality Physical Education for all Young People

- To work with the school leadership team to ensure provision of high quality physical education for all young people in their school.
- Work with the School Sport Coordinator in signposting to the Local Delivery Agency to support the delivery of high quality physical education.

Access to High Quality Activities on a School Site

- Determine the school's sporting landscape - who are the engaged, the non-engaged and what are their barriers to participation?
- Work with the School Sport Coordinator to implement appropriately targeted, sustainable high quality OSHL programmes in their school.

Access to High Quality Activities in a Community Environment

- Work with the School Sport Coordinator and partners to signpost young people in their school to appropriate high quality community sport pathways.

Provision for young people to develop their potential

- Identify which young people in their school are engaged in competition and determine the barriers for those that aren't engaged.
- Work strategically with the School Sport Coordinator and Competition Manager to increase high quality competition opportunities for all young people.

Coaching, Leadership and Volunteering

- Identify which young people in the school are actively engaged in coaching, leading and volunteering; determine the barriers for those who aren't and develop a suitable pathway to grow and deploy all young people in high quality coaching, leadership and volunteering roles.
- Support school staff to implement high quality leadership and volunteering development programmes.
- Ensure that young people engaged in coaching, leadership and volunteering are reflective of the diversity of the school, fully utilising the Step into Sport pathway to support development.
- In conjunction with the School Sport Coordinator ensure that coaching, leadership and volunteering development within the school is part of a wider strategic, sustainable development process.

Competition Manager

Katherine Baird / Adele Modeste (Job share)
kbaird@kelseyark.bromley.sch.uk Tel 07983387841
amodeste@kelseyark.bromley.sch.uk Tel 07713129794

To support the modernisation of the competition landscape by strategically developing opportunities to increase the number of young people taking part in inter-school competition on a local level.

Overall role

- Overall responsibility for increasing the number of young people taking part in regular, high quality inter-school competition.
- Modernising the competition environment and building solutions to challenge barriers.

Main Responsibilities and Tasks

- Link local competition priorities with the national competition framework, incorporating associated National Governing Bodies and School Association national templates.
- Support their Partnership network(s), ensuring that they provide high quality school and college competitions
- Work strategically with the Partnership Development Manager to increase high quality competition opportunities for all young people.
- Identify and support the continued professional development needs of the School Sport Coordinators, Further Education Sport Coordinators and Primary Link Teachers associated with the delivery of high quality schools competitions.
- Through the Senior Competition Manager ensure that the competition programme compliments that of other local Partnerships.
- In conjunction with the County Sports Partnership and other sporting partners, ensure that opportunities for talented young people to access high quality performance opportunities is part of a wider strategic, sustainable coaching development process.
- Manage and co-ordinate the monitoring and evaluation of projects associated with the programmes, fulfilling local and national data collection requirements.
- Ensure that the competition programme is effectively linked with other strands of PESSYP and other relevant national programmes.
- Advocate the role of competition, promoting benefits and successes, ensuring it has a high profile.

Step Into Sport Manager

Paul Bailey

quietmanpaul@yahoo.co.uk

Tel 07984080259

Step into Sport Manager is responsible for overseeing all the leadership opportunities through the Step into Sport programme

Overall role

Step Into Sport

- Coordinate the Step Into Sport project across all **Bromley** secondary schools and link with FE Colleges

Specific functions

Step into sport

- Liaison with schools regarding all stages of Step Into Sport & keep them informed of the key dates
- Monitor and evaluate participation figures and use analysis of PESSYP data to identify priority areas and schools
- Introducing & developing the volunteer passport scheme (school & community)
- Facilitating opportunities for young leaders to attend local and national conferences
- Organising training dates for Partnership schools
- Engaging secondary schools in the project
- Key co-ordinator of the Young Ambassador programme. Establish work programme for all YA's.
- Working with schools to develop volunteering opportunities within school and the community
- Work with the PDMs in developing a Leadership Academy

General

- Report back to the Partnership Development Managers on a regular basis (monthly)
- Attendance at SSCo team meetings and Head of PE termly forums
- Production of written reports in line with partnership requirements
- Represent Partnerships at regional briefings
- Liaise link with Pro-active South London (Volunteer co-ordinator)
- Link with the Community Club officer (SSCo) to develop volunteering opportunities in the community & inform the clubs of SIS
- Establish a leadership pathway plan from KS1 to KS5
- Liaise with SSCos – 3 year plan for leadership in their secondary schools

Communication & Support Structure

It is important that the PDM, SSCOs & PLTs meet regularly to share, explore and disseminate information & developments. To this aim the following structure will be put in place:

Informal Support

- PDM will be available to provide support for SSCO's throughout the year. This will take the form of individual meetings, telephone calls and emails on a regular basis.
- Both PDM & SSCO's will be available to provide support for PLT's throughout the year.

Meetings

- All SSCOs will attend half termly team meetings with the PDM
- PDM will meet with SSCO and their line manager on twice a year to review progress
- All SSCOs will meet regularly with their HOD

Family Cluster Meetings

- SSCO's will chair termly family PLT cluster meetings forming part of the Partnership days.

Reporting

- SSCO's will be required to write and submit termly action plans based on priorities identified from PESSYP survey data.
- SSCO's will be required to monitor, review and evaluate these plans termly



SPORTS PARTNERSHIP CPD CALENDAR 2010 - 11

Autumn – First Half Term CPD Calendar

<u>DATE</u>	<u>Course</u>	<u>Target Group</u>	<u>Venue and time</u>
9 Sept	SSCo/ FEsko meeting	All Bromley SSCOs/FEcos (West/ East)	EDC 8.30-11.00
16 Sept	Partnership Day East	PLT's / SScO's East	The Priory School 9.00 – 12.30
23 Sept	Partnership Day West	PLT's / SScO's West	Kelsey Park Sports College 9.00 -12.00
5 October	PLT Module A	New PLTs	Kelsey Park Sports College 4.15 to 5.45
7 October	Gymnastics Session 1 (please book through EDC 0208 462 8911)	NQTs Primary	Bishop Justus 3.30 to 5.00
14 October	Gymnastics Session 2 (please book through EDC 0208 462 8911)	NQTs Primary	Southborough Primary Sch 4.15 to 5.45
TBA	<i>High 5 Netball Key Steps Gymnastics</i>	<i>Primary Teachers</i>	TBA

Autumn – Second Half Term

4 Nov	Primary PE Conference	All Day	Kelsey Park SC
10 Nov	HODs meeting	Secondary PE HODs	EDC 9.00 – 12.00
17 Nov	Games Training (please book through EDC 0208 462 8911)	NQT's Primary	Kelsey Park SC 4.15 to 6.00
18 Nov	SSCo/FEsko meeting	All Bromley SSCOs/FEsko (West)	Kelsey Park 8.30-11.00
18 Nov	SSCo/FEsko meeting	All Bromley SSCOs/FEsko (East)	The Priory 8.30-11.00
1 Dec	A focus on the Physical Education Curriculum – Based on PLT Module C	PLTs	EDC 9.15 to 12.00
TBA	<i>Indoor Sportshall - Oct / Nov Tag Rugby – December</i>	<i>Primary Teachers</i>	TBA

Spring– First Half Term

6 Jan	SSCo/ FEsko meeting	All Bromley SSCOs/FEscos (West/ East)	EDC 8.30-11.00
10 Jan	Secondary Heads of PE termly forum	Heads of PE	EDC 4.00 – 5.30
11 Jan	Primary PE Subject Leader termly forum	Primary PE Subject Leader	EDC 4.30-6pm
TBA	<i>Tri-Golf Mini-Tennis</i>	<i>Primary Teachers</i>	TBA
20 Jan	Partnership Day East	PLT's / SSCo's East	The Priory School
20 Jan	Partnership Day West	PLT's / SSCo's West	Kelsey Park Sports College
25 Jan	Assessment for Learning in Physical Education – Based on PLT Module D	All Bromley East & West Partnership PLTs who have not yet completed Module D training.	EDC 9.15 - 12.00

Spring – Second Half Term

2 March	Heads of Department Meeting	9.00am - 12.noon	EDC
3 March	SSCo/ FEsko meeting	All Bromley SSCOs / FEsko(West)	Kelsey Park 8.30-11.00
3 March	SSCo/FEsko meeting	All Bromley SSCOs/ FEsko (East)	The Priory 8.30-11.00
16 March	Evaluating teaching and learning in Physical Education lessons - Based on PLT Module E	All Bromley East & West Partnership PLTs who have not yet completed Module E training.	EDC 9.15 - 12.00
7 April	Partnership Day West	PLT's / SSCo's West	Kelsey Park Sports College
7 April	Partnership Day East	PLT's / SSCo's East	The Priory School
TBA	<i>Rounders</i>	<i>Primary Teachers</i>	TBA

Summer – First Half Term

28 April	SSCo/ FEsko meeting	All Bromley SSCOs/FEscos (West/ East)	EDC 8.30-11.00
3 May	Primary PE Subject Leader termly forum	Primary PE Subject Leader	EDC 4.30-6pm
9 May	Secondary Heads of PE termly forum	Heads of PE	EDC 4.00 – 5.30
26 May	PESSYP Survey meeting	PLT's /SSCo's	The Priory Kelsey Park 1.00 - 3.00
TBA	<i>Quad Kids - April</i>	<i>Primary Teachers</i>	TBA

Summer – Second Half Term

8 June	PE HOD Meeting	Secondary PE HOD	EDC 9.00 to 12.00
9 June	SSCo/FEsco meeting	All Bromley SSCOs /FEsco (West)	Kelsey Park 8.30-11.00
9 June	SSCo/FEsco meeting	All Bromley SSCOs/FEsco (East)	The Priors 8.30-11.00

www.bromleyssp.co.uk

Please note : Primary NQT Dance & Athletics to be arranged plus other additional courses as and when required.



Bromley School Sport Partnership Primary Calendar 2010/11



Date	Event	Year Group	Location	Pathway	Time
Autumn Term					
18 th October 19 th October 20 th October	Swimming Gala Small Schools Medium Schools Large Schools	5 and 6	Eltham College		During School (AM)
November	Mini Hockey	5 and 6	TBA	Borough winners → LYG	After School
11 th November 18 th November 25 th November 27 th January	High 5 Netball East Schools West Schools Reserve Date Final	5 and 6	East and West Hayes School	SSP winners → county final Borough winners → LYG	During School
20 th November	Cross Country	3,4,5,6	Crystal Palace		Saturday
29 th November	Emerging High 5 Netball	5 and 6	Hayes School		After School
w/c 6 th December	Basketball (East)	3 and 4	TBA		After School
9 th December	Basketball (West)	3 and 4	Kelsey Park Sports College		After School
TBC	Table Tennis	5 and 6	TBA		After School
TBC	Mini Football	5 and 6	Various		After School
Spring Term					
w/c 10 th January	Sports Hall Athletics	5 and 6	Beaverwood (East) Langley Park Girls (West)	SSP winners → county final	After School
w/c 24 th January	Gym Festival	R-6	Bromley Valley Gym		During School
3 rd February w/c 7 th February 10 th March	Basketball West Schools East Schools Final	5 and 6	Kelsey Park Sports College TBA Kelsey Park Sports College	Players selected for LYG squad	After School
17 th February	Key Steps Gym	3 and 4 5 and 6	Cator Park School	Borough winners → LYG	After School
7 th March	Lacrosse	5 and 6	The Priory	Borough winners → county final	After School
12 th March	Cross Country	3,4,5,6	Crystal Palace		Saturday
17 th March 24 th March	Tag Rugby East Schools West Schools	5 and 6	Westcombe Park RFC Beckenham RFC	SSP winners → county final	During School
w/c 4 th April	Aqua Splash Festival	KS 2	Eltham College		During School
7 th April	Tri Golf Festival	5 and 6	TBA	SSP winners → county final	During School

Summer Term

29 th April 6 th May	Cycling (Reserve)	5 and 6	Norman Park		After School
12 th May	Boccia	2	Marjorie McClure		During School
w/c 23 rd May	Quad Kids	5 and 6	TBA	Borough winners → county final	After School
w/c 23 rd May 8 th June	Rounders (Reserve)	6	Bullers Wood	Borough winners → county final	After School
7 th June 9 th June	Mini Tennis East Schools West Schools	3 and 4	Bromley Tennis Centre	SSP winners → county final	During School
tbc	Inclusive Sports Festival	KS2	The Priory School		During School
14 th June	Girls Kwik Cricket	4 – 6	Hayes CC	Borough winners → county final	During School
16 th June 20 th June	Kwik Cricket (Reserve)	5 and 6	Orpington CC	Borough winners → county final	During School
tbc	Infant Festival	1 and 2	TBA		After School
w/c 27 th June	KorfBall	5	Cator Park	Borough winners → county final	After School
23 rd June 30 th June 7 th July 11 th July 18 th July	Athletics Championships Large Schools Medium Schools Small Schools Reserve Individual Final	5 and 6	Norman Park		During School
12 th July 14 th July	Tennis West Schools East Schools	5 and 6	Bromley Tennis Centre		During School
13 th July	Quad Kids	3 and 4	TBA		After School

*East & West Dance festival dates tbc *



Bromley Secondary Calendar 2010/11



Date	Event	Year Group	Location	Pathway	Time
Autumn Term					
11 th October	Table Tennis	7 and 8	Kemnal	Winners → Regional Final	After School
18 th October	Table Tennis	9, 10 and 11	Kemnal	Winners → Regional Final	After School
19 th October	U14 Netball Tournament	9	Hayes School		After School
2 nd November	Trampolining	7 – 11	Hayes School		During School
3 rd November	Yr 11 Rugby League Champ Schools (Boys)	11	Storm RL, Croydon	Winners → Regional Final	During School
9 th November	U15 Netball Tournament	10	Hayes School		After School
9 th November	Yr 7 Rugby League Champ Schools (Boys)	7	Storm RL, Croydon	Winners → Regional Final	During School
11 th November	Yr 9 Rugby League Champ Schools (Boys)	9	Storm RL, Croydon	Winners → Regional Final	During School
17 th November	Yr 8 Rugby League Champ Schools (Boys)	8	Storm RL, Croydon	Winners → Regional Final	During School
24 th November	Yr 10 Rugby League Champ Schools (Boys)	10	Storm RL, Croydon	Winners → Regional Final	During School
26 / 30 th November	South London Table Tennis Finals	7-11	Whitgift School, Croydon	FINAL	During School
30 th November	U16 Boys Badminton	9 and 10	The Priory School	Winners → Regional Final	After School
2 nd December	U14 & U16 Girls Badminton	7 – 11	LPGS	Winners → Regional Final	After School
3 rd December	KS 4 Lacrosse	10 and 11	TBA		During School
w/c 6 th December	'B' League Netball	7 and 8	Bullers Wood School		After School
9 th December	U14 Boys Badminton	7, 8 and 9	The Priory School	Winners → Regional Final	After School
14 th December	U14 Girls Basketball	8 and 9	TBA	Winners → Regional Final	After School
13 th December 10 th January 14 th February	U16 Boys Basketball	10 and 11	Coopers School		After School
15 th December 12 th January 16 th February	U14 Boys Basketball	8 and 9	Coopers School		After School
16 th December 13 th January 17 th February	U12 Boys Basketball	7	Coopers School		After School

Spring Term					
18 th Jan	U13 Netball Tournament	8	Hayes School		After School
27 th Jan	U14, U15, U16 South London Basketball Finals	9, 10 and 11	Dulwich College	SL winners → London final	During School
28 th Jan	Gym Festival	7-11	Bromley Valley Gym		During School
31 st Jan / 1 st Feb	South London Badminton Finals	7-11	Crystal Palace National Sports Centre	FINAL	During School
2 nd February	Boys Rugby League Festival (New Schools)	7	Lanfranc		1-4pm
w/c 7 th February	Boys Sports Hall Athletics	7 and 8	The Priory	Winners → Regional Final	After School
w/c 7 th February	'B' League Netball	7 and 8	Bullers Wood		After School
w/c 14 th February	Girls Sports Hall Athletics	7 and 8	LPGS	Winners → Regional Final	After School
w/c 7 th March	'B' League Netball	7 and 8	Bullers Wood		After School
8 th March	Yr 7 & Yr 9 Rugby League Champ Schools (Girls)	7 and 9	Lanfranc, Croydon	Winners → Regional Final	1-4pm
15 th March	Yr 8 & Yr 10 Rugby League Champ Schools (Girls)	8 and 10	Lanfranc, Croydon	Winners → Regional Final	1-4pm
18 th March	South London Sports Hall Athletics Final	7 and 8	Westcroft, Sutton	SL winners → London final	During School
5 th April	Cheerleading	7 – 13	Beaverwood		After School
6 th April	London Sports Hall Athletics Final	7 and 8	Crystal Palace National Sports Centre	FINAL	During School
tbc	Integrated Swimming Gala	7, 8, and 9	Eltham College		During School
Summer Term					
May	Athletics	7-11	Norman Park	Winners → Regional Final	During School
May – July	Cricket Knock Out Cup	7, 8, 9 and 10	Various		Various
9 th June	Inter Cricket	7	TBA	Borough winners → county final	10-3pm
tbc	Rounders	7, 8, 9 and 10	Charles Darwin School	Borough winners → county final	During School
23 rd June	South London Yr 10 Rounders Finals	10	TBA	FINAL	During School
tbc	Tennis	7 and 8	TBA	SSP winners → county final	During School
5 th July	South London Yr 7&8 Tennis Finals	7 and 8	Bromley Tennis Centre	FINAL	1-4pm
July	Golf	7 – 13	Chelsfield Lakes GC	SSP winners → county final	During School

Funding Process

School Sport Coordinators (SSCO)

Secondary schools will receive £18519 per annum to cover the cost of the School Sport Coordinator. Payment will be made to secondary schools at 3 intervals in the year (end of November, February, May) upon receipt of an invoice for £6173.

An annual contribution of £300 will be made to each secondary school upon receipt of an invoice to cover travel and administration expenses of the School Sports Coordinator. It is expected that SSCO's will claim their travel expenses through their individual schools in the usual way.

Primary Link Teachers (PLT)

PLT's will be able to claim up to 12 days per year release time at a rate of £153 per day to attend training and develop high quality PE and school sport. Schools should send an invoice along with the PLT Release Time Allocation Form (see next page) **at the end of each term** to their Partnership Development Manager



Bromley School Sport Partnership

Record of Primary Link Teacher (PLT) allocated release time

Name of school:

Name of PLT:

Term: Autumn / Spring / Summer 2010 - 11

Date	Amount of time	Detail of activities, training, etc
Total number of days for the term _____ x £153 =		

Signature of PLT:

Signature of Headteacher:

- Please return this form **with an invoice for the supply cover at a rate of £153 per day** at the end of each term to your Partnership Development Manager.